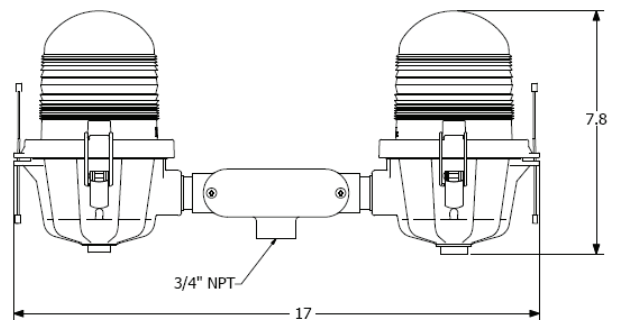
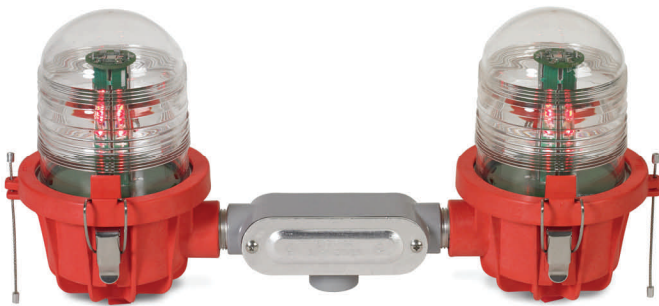


# MKR-ILED-DB1

LED Double Obstruction Light

Visit our website: [www.itl-llc.com](http://www.itl-llc.com)

The **MKR-ILED-DB1** Double Obstruction Light utilizes LED technology and Fresnel Optics to provide a reliable low power tower lighting solution.



## Features

- Light weight rugged plastic design.
- Stainless steel latches and hardware.
- 3/4 Inch conduit entrance.
- Modular replaceable power supplies.
- Power supplies operate from 100 to 240 Vac, 50/60Hz
- Available in 12/24/48 VDC versions.

## Specifications

Specifications:	ETL Certified to AC150/5345-43F, Type L-810. ICAO Low Intensity Type B version available.
Intensity:	32.5 effective candelas (min.)
Temperature:	-40°C to +55°C
Humidity:	less than 95%, non-condensing
Height:	7.9 Inches (20.0 cm)
Width:	5.4 Inches (13.7 cm)
Length:	17 Inches (43.2 cm)
Weight:	6.5 lbs. (3 Kg)
Power:	100 to 240 Vac, 50 / 60 Hz, 14W
Mounting:	3/4 inch conduit entrance (bottom)

