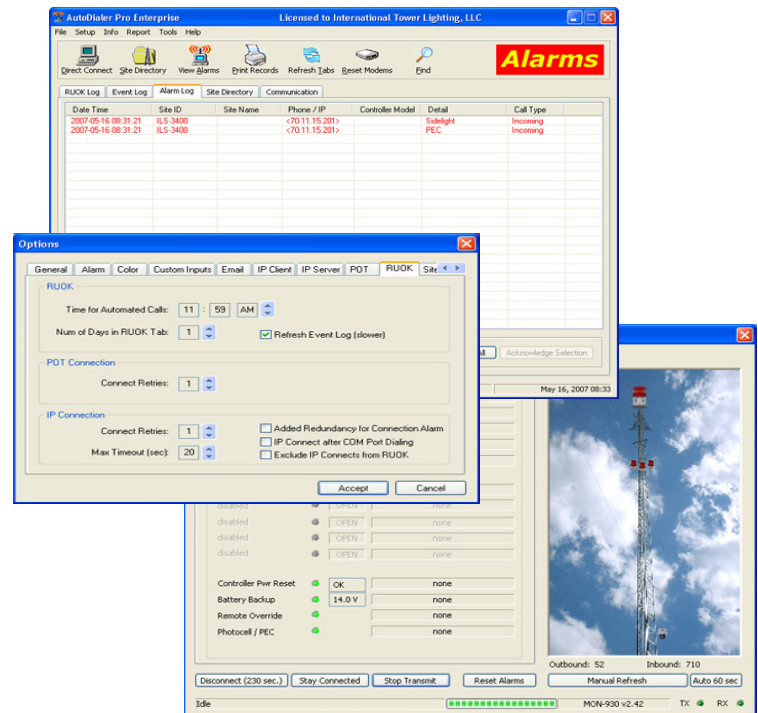


AutoDialer Pro™

AutoDialer Pro Software for
Remote Tower Monitoring

Visit our website: www.itl-llc.com

ITL AutoDialer Pro™ Network Operation Center (NOC) Software works with ITL monitoring systems to keep you informed about your tower sites. **ITL AutoDialer Pro™** software utilizes client/server architecture to allow multiple users to simultaneously access historical data, connect to sites in real-time, view incoming alarms, and perform database operations.



Features

- Extensive logging and reporting of historical data.
- Multi-user client/server software architecture.
- Internet protocol (IP) and dial-up modem communication capability.
- Supports multiple simultaneous modem and IP connection sessions for increased speed.
- E-mail notification of alarms.
- Remote-control of tower lighting system intensity mode (Day/Night mode) to aid in troubleshooting and diagnostics.
- Real-time graphic display of tower lighting system alarm state.
- Access to photocell day/night transition times and alarm times.

Scalable to fit needs of any size organization:

Enterprise Edition: max. 25,000 Sites

Standard Edition: up to 250 sites

Lite Edition: up to 25 sites



1001 Centre Pointe Drive, Suite A La Vergne, TN 37086 USA
Phone: +1 (615) 256-6030 Toll Free: +1 (866) 624-8309 Fax: +1 (615) 256-6032
Copyright © 1999 - 2016, Revision 6

