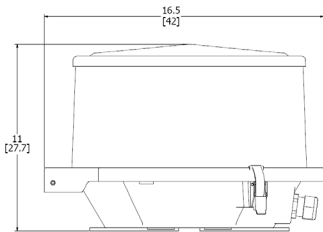


IFH-1700

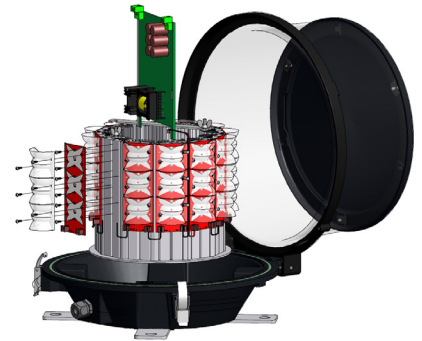
Medium Intensity
L-864(L) Red LED Beacon

Visit our website: www.itl-llc.com



The **IFH-1700-000** utilizes the latest LED technology and advanced optics to achieve a compact, energy efficient, L-864(L) medium intensity red beacon. The IFH-1700-000 comes ready for installation with a 10 foot cable attached. Designed for durability, the IFH-1700-000 has an aluminum top and base and clear acrylic cover. The IFH-1700-000 is

designed for long term maintainability with field replaceable LED boards, power supply board, and light engine.



Features

- Designed as a energy efficient replacement to 300mm incandescent beacons.
- Durable design uses aluminum top and base and clear acrylic cover.
- All metal parts are stainless steel or aluminum to resist corrosion.
- Meets or exceeds EMI/RFI standards for the industry.
- Universal power input.
- Industry standard mounting hole footprint.
- Modular, maintainable design.
- Field replaceable components include:
 - LED Light Engine
 - LED Boards
 - Power Supply board
- External controller required (not included)

Specifications

Specifications: ETL Certified to FAA AC150/5345-43, Type L-864(L) and Engineering Brief 67. Requires RLC-201L-000 Controller (Sold separately).



Temperature: -40°C to +55°C
Humidity: Less than 95%, non-condensing
Night Intensity: 2,000 ±25% effective candelas
Beam Pattern: 360° Horizontal, ≥3° Vertical
Dimensions: Height: 11" (27.7cm), Diameter: 16.5" (42cm)
Weight: 28lbs (13Kg)
Suppression: 80 Joule, 150V, MOVs and 600V Gas Tube
Input Power: 120 to 240 Vac, 50 or 60 Hz, 40W (flashing)

