

ILS-1700-CAT

L-885 Catenary Red Night
LED Obstruction Lighting System

Visit our website: www.itl-llc.com

The ILS-1700-CAT Medium Intensity Catenary Red Night Lighting System

provides night time marking of catenary support structures. The flash head utilizes the latest LED technology and precision optics to provide a reliable low-power catenary obstruction lighting solution. Housed in a stainless steel enclosure, the controller can operate up to six LED flash heads. **GPS** technology is utilized to wirelessly synchronize the flashing of multiple lighting systems.



Features

- Up to six LED flash heads can be operated from each RLC-0236-000 controller.
- GPS Technology provides wireless flash synchronization of multiple obstruction lighting systems.
- Alarm Contacts (Form-C) provided for each LED flash head, as well as Power Failure and Photocell alarms.
- Status Contacts (Form-C) provided for day/night mode.
- Manual Mode Override switch.
- Utilizes industry standard photocell to automatically turn on/off the lighting system when ambient light reach FAA required levels.
- Built-in fusing for each LED flash head as well as photoelectric cell (PEC).

Specifications

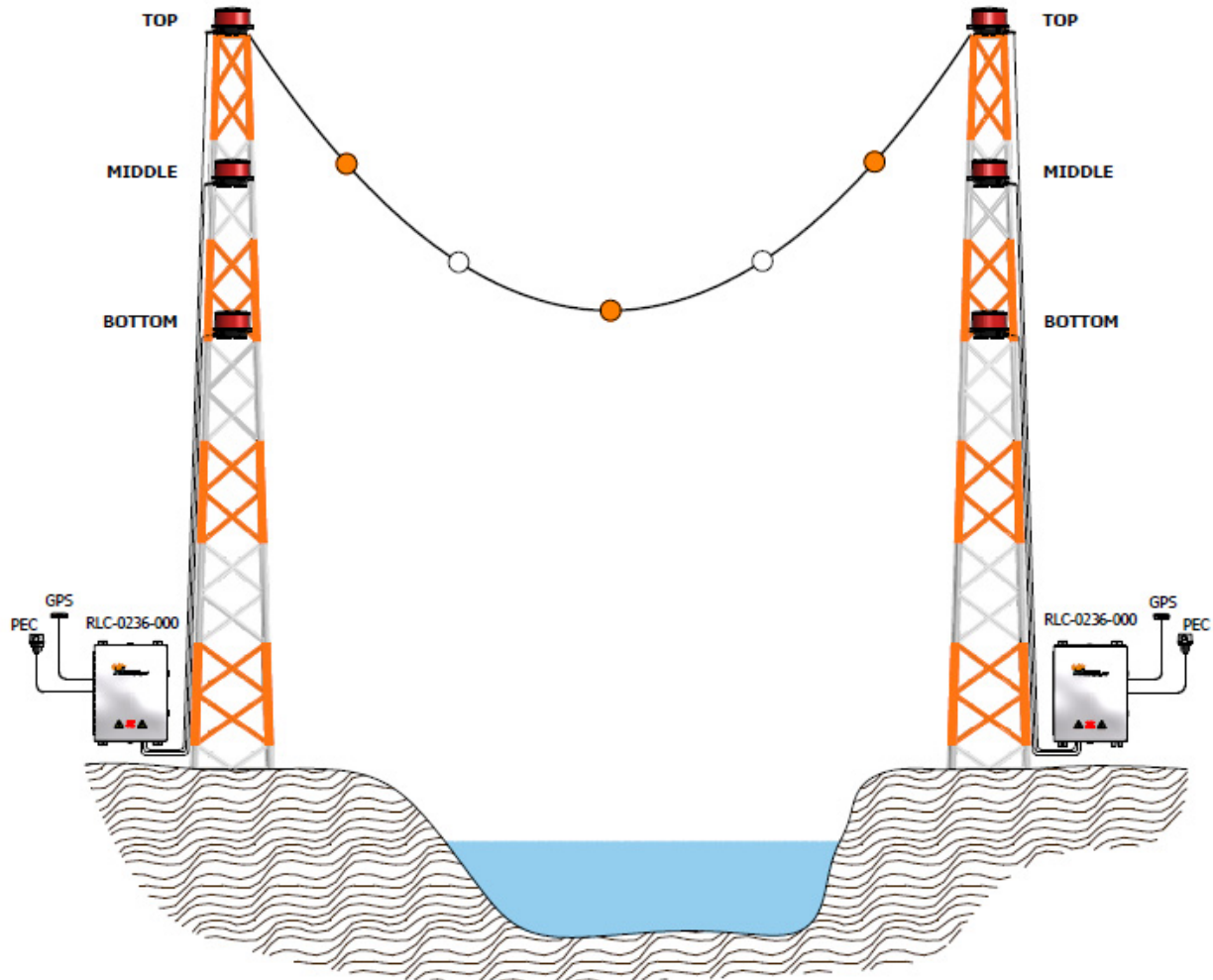
| | |
|------------------|--|
| Standards: | Complies with FAA AC150/5345-43, Type L-885 |
| Temperature: | -40°C to +55°C |
| Humidity: | Less than 95%, non-condensing |
| Night Intensity: | 2,000 \pm 25% effective candelas |
| Beam Pattern: | 360° Horizontal, \geq 3° Vertical |
| Flash Rate: | 60FPM Red Night |
| Side Lights: | 0 to 4 Type L-810(L) LED |
| Flash Head: | Height: 25" (63.5cm), Diameter: 16.5" (42cm), Weight: 24lbs (11Kg) |
| Power Supply: | 22.29"(56.6cm) x 16.57"(42cm) x 9.76"(24.8cm), 65lbs(20Kg) |
| Suppression: | 300 Joule, 275V, Input Power, Flash Heads and Side Lights. 45 Joule, 275V, All Dry-Contact Alarms |
| Input Power: | 120 Vac, 50/60 Hz, Controller: 20W Each flash head: 40W |



1001 Centre Pointe Drive, Suite A La Vergne, TN 37086 USA
Phone: +1 (615) 256-6030 Toll Free: +1 (866) 624-8309 Fax: +1 (615) 256-6032
Copyright © 2013 - 2015, Revision 4

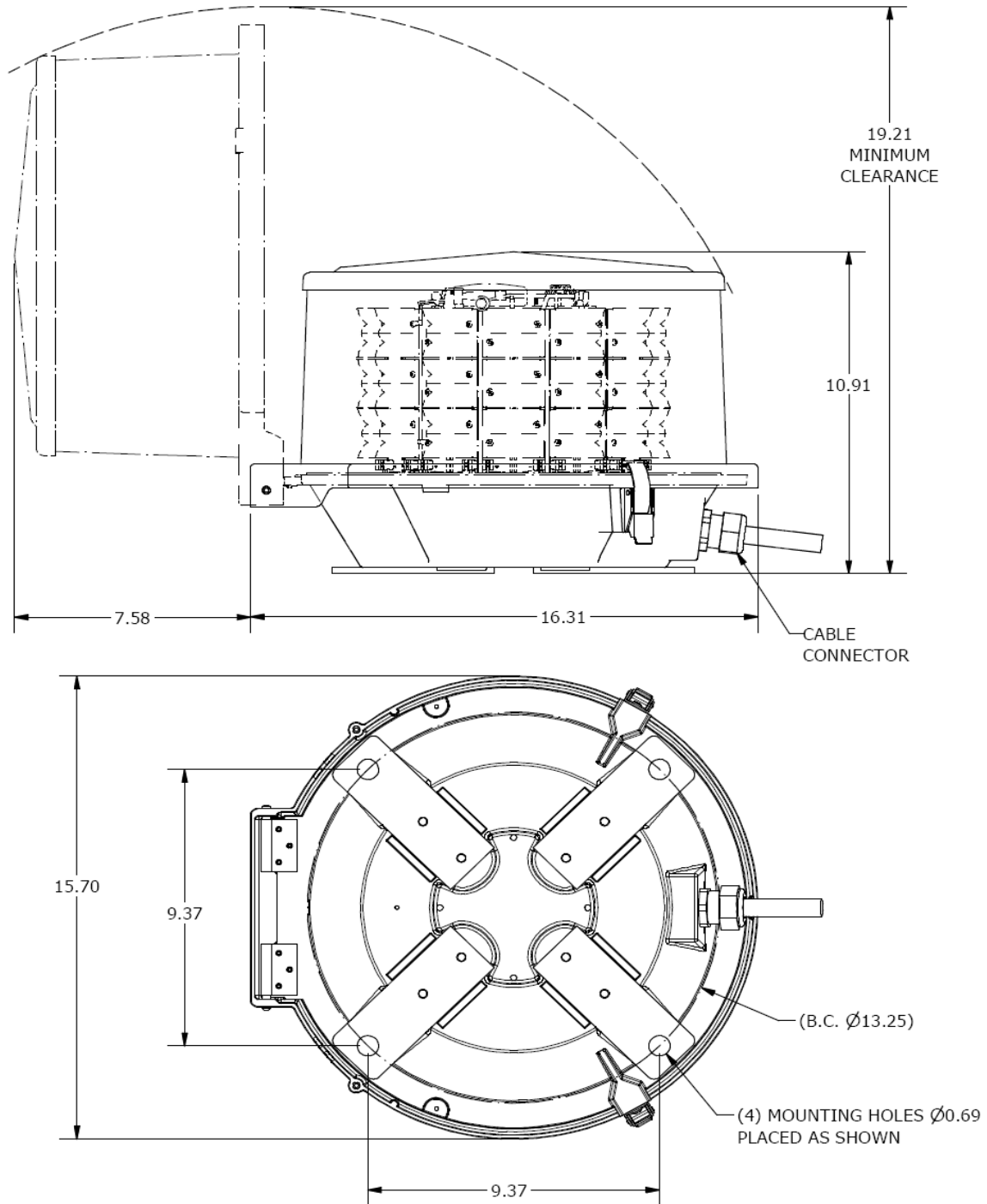


ILS-1700-CAT Typical Application—Transmission Line River Crossing



- Flash Sequence: Middle—Top—Bottom.
- Top level lights mark the highest point of the catenary support structure.
- Middle level lights mark the middle of the catenary.
- Bottom level lights mark the lowest point of the catenary.
- Middle level lights may be omitted if the distance between top and bottom lights is less than 100 ft.
- Catenary support structures require paint or white day catenary lighting systems (not included) for day time marking.
- The catenary may require markers, spherical or cylindrical, of alternating color (not included) for day time marking.
- Multiple lights may be required at each level.
- Refer to FAA's Aeronautical Study of the structure for determination of required lighting system type and configuration.
- See FAA Advisory Circular 70/7460 Obstruction Lighting and Marking for detailed requirements.

IFH-1700 Medium Intensity Red LED Flash Head Dimensions



RLC-0236-000 Medium Intensity Red Catenary Controller Dimensions

