

Installation Instruction Manual

MKR-S750-0DH
MKR-D750-000

Single & Double
Red Incandescent
Obstruction Lights



Toll Free: +1 (866) 624-8309 • www.itl-llc.com



Front Matter

Copyright & Trademarks

Copyright © 2004 - 2013 by ITL, LLC. All rights reserved. This document contains proprietary information, photographs, graphics, and other material (collectively, "the Content") protected by copyright, and this manual and all accompanying hardware, software and documentation are copyrighted. No part of this document may be photocopied or reproduced by mechanical, electronic, or other means in any form without written consent of ITL, LLC.

ITL, LLC, MKR-S750-ODH & MKR-D750-000 and the *ITL* logo are trademarks of ITL, LLC. All other trademarks and brand names are the property of their respective proprietors.

Limited Warranty and Disclaimer

ITL, LLC guarantees that every *MKR-S750-ODH & MKR-D750-000* obstruction light is free from physical defects of material and workmanship under normal use for two (2) year from the date of purchase. If the product proves defective during this warranty period, please contact ITL, LLC in order to obtain a Return Authorization Number, RMA.

In no event shall ITL, LLC's liability exceed the price paid for the product from direct, indirect, special, incidental, or consequential damages resulting from the use of the product, its accompanying software, or its documentation. ITL, LLC makes no warranty or representation, expressed, implied, or statutory, with respect to its products or the contents or use of this documentation and all accompanying software, and specifically disclaims its quality, performance, merchantability, or fitness for any particular purpose unless otherwise stated.

The technical documentation is being delivered to you AS-IS. ITL, LLC makes no warranty as to its accuracy or use. Any use of the technical documentation or the information contained therein is at the risk of the user. Documentation may include technical or other inaccuracies or typographical errors. ITL, LLC reserves the right to revise or update its products, software, or documentation without obligation to notify any individual or entity.

Please send any comments regarding the manual to support_doc@itl-llc.com.

Safety Warning



This equipment uses lethal voltage which can cause serious injury and/or death. Do not attempt to service this equipment with line power applied. Do not rely on interlock switches; remove lethal voltages from the system. Measure for voltages using a voltmeter to ensure that power is off and has been completely removed. Do not wear any jewelry. Gold and silver are excellent conductors of electricity.

Table of Contents

The fastest way to find a specific topic is to use the detailed index in the back of the manual.

Front Matter	2
Copyright & Trademarks	2
Limited Warranty and Disclaimer	2
Safety Warning	2
Introduction	4
Product Description	4
Specifications	5
Environment	5
Mechanical	5
MKR-S750-ODH (Single)	5
MKR-D750-000 (Double)	5
Electrical	5
Lamps	5
Mounting:	5
Installation	6
Unpacking your Obstruction Light	6
Tools for Installation	6
Quick Installation	6
Installation Wiring Diagram	6
Parts Locator (MKR-S750-ODH)	7
Parts Locator (MKR-D750-000)	7
Replacement Parts	8
Technical Support and Contact Info	8
Contact Info	8
RMA	8

Introduction

Congratulations, and thank you for choosing an ITL L-810 red obstruction light.

The ITL, LLC L-810 red obstruction light has been tested for compliance with applicable FAA specifications for marking hazards to air navigation such as towers, smoke stacks or similar structures. It is intended for installations which require FAA L-810 red lights.

Included in this manual are list of specifications, electrical connection diagram, bill of material and contact information.

Product Description

The MKR-S750-0DH Single Obstruction Light and MKR-D750-000 Double Obstruction Light have been tested for compliance with applicable FAA specifications for marking hazards to air navigation such as towers, smoke stacks or similar structures. It is intended for installations which require FAA L-810 red lights.



*MKR-S750-0DH
Single Obstruction Light*



*MKR-D750-000
Double Obstruction Light*

Specifications

ETL Certified to AC150/5345-43G, Type L-810

Environment

Temperature	-40°C to +55°C
Humidity	less than 95% relative humidity (non-condensing)

Mechanical

MKR-S750-ODH (Single)

Dimension	Height:	8.5"	(21.6 cm)
	Width:	6"	(15.3cm)
Weight	3 lbs		(1.4 Kg) max

MKR-D750-000 (Double)

Dimension	Height:	8.5"	(21.6 cm)
	Width:	11.5"	(29.2cm)
	Length:	6"	(15.3cm)
Weight	10 lbs		(4.5Kg) max

Electrical

Input Power	120VAC 50/60Hz (240 Vac version available)
-------------	---

Lamps

116W, 120 Vac
(Lamps sold separately)

Mounting:

3/4 inch conduit entrance (bottom)

Installation

The following section describes how to install the obstruction light. Please refer to the appropriate wiring diagram below.

Unpacking your Obstruction Light

Please examine the shipping containers and their content thoroughly upon receipt and report any potential shipping damage to the carrier.

Tools for Installation

The following tools are suggested for mounting of the obstruction lights.

- Digital multi-meter capable of reading 600VAC/DC (Fluke 177 or 179)
- Nut Drivers and Sockets
- #2 Phillips Screwdriver
- 5/16 Flat Head screwdriver
- Crimp Tool
- Needle Nose Pliers

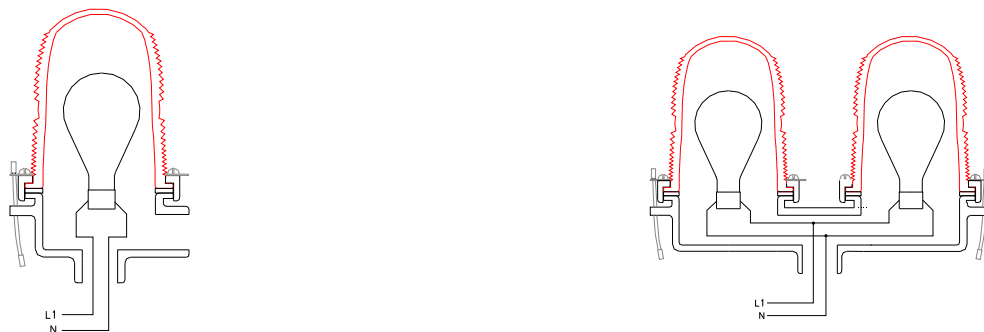
Quick Installation

The MKR-S750-ODH (L-810) single obstruction light has $\frac{3}{4}$ inch NPT side and bottom hubs available for mounting. The L-810 must be leveled during installation for correct vertical beam alignment.

The MKR-D750-000 (L-810) double obstruction light has a $\frac{3}{4}$ inch NPT bottom hub available for mounting. The L-810 double obstruction light must be leveled during installation for correct vertical beam alignment.

Installation Wiring Diagram

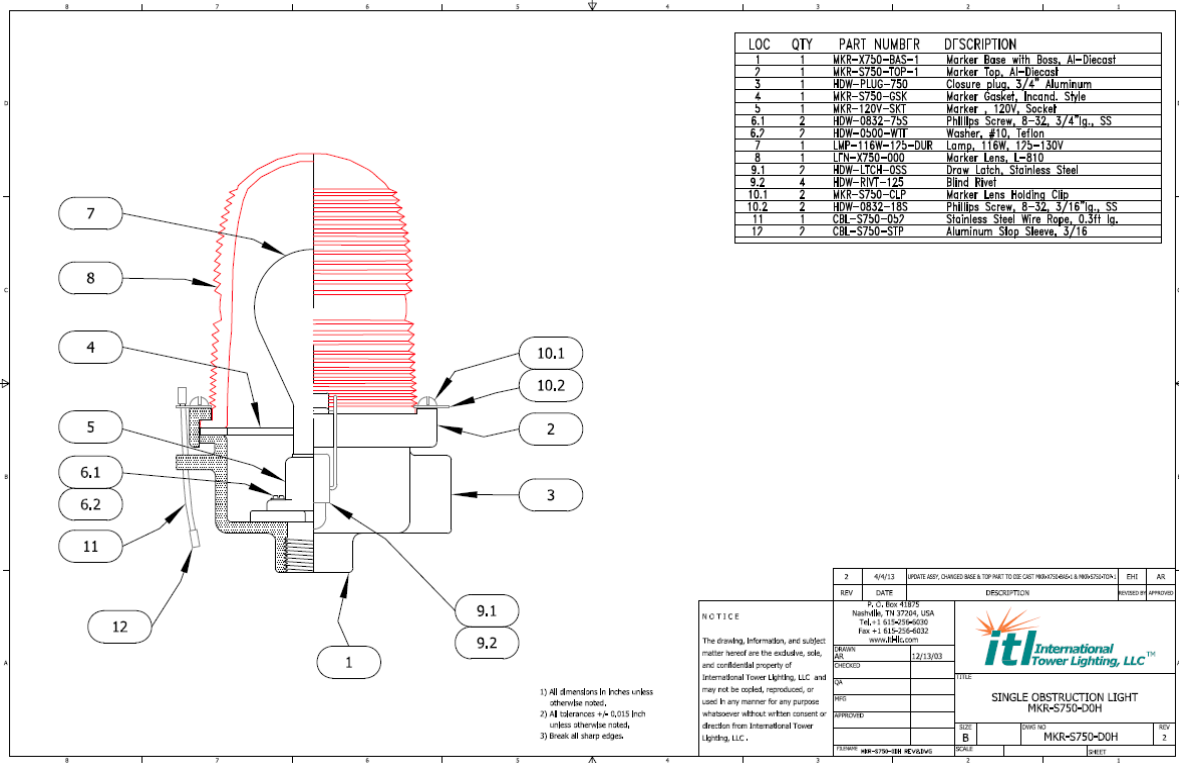
Sample connections for typical obstruction lights are shown in the diagrams below.



MKR-S750-ODH Single and MKR-D750-000 Double Obstruction Wiring Diagram

It is the responsibility of the installer to comply with all applicable local, state, and federal regulations for installation and operation of this device.

Parts Locator (MKR-S750-ODH)



Replacement Parts

ITL Order P/N	Description
LMP-X750-000	RED FRESNEL LENS
MKR-S750-GSK	GASKET
MKR-120V-SKT	PORCELAIN SOCKET
LMP-116W-120	LAMP, 120VAC / 116W

Technical Support and Contact Info

Contact Info

For information on the MKR-S750-ODH / MKR-D750-000 obstruction lights' basic functions, refer to this manual and the accompanying drawings. For additional help with the installation or operation of any ITL products, please contact ITL, LLC at one of the following below.

Web and Internet Sites

Corporate home page: <http://www.itl-llc.com>



Customer Support Technicians
(8:00 AM - 5:00 PM Central Time)

US and Canada call: +1-615-256-6030

Toll Free: +1-866-624-8309

Email: support@itl-llc.com

RMA

Please contact ITL, LLC before returning equipment for repair and obtain a Return Material Authorization (RMA) number.

Revision	Description of Change	Date	Preparer / Approval
2	Update cover sheet, Combined manuals for MKR-S750-ODH & MKR-D750-000 into one manual.	6/26/2012	Prepared By: Elke Hinson Approved By: Andy Rudolph
3	Update Single & Double Marker Parts Locator Drawings	4/04/2013	Prepared By: Elke Hinson Approved By: Andy Rudolph
4	Update Electrical Power	4/26/2013	Prepared By: Elke Hinson Approved By: Andy Rudolph
5	Update FAA Specification revision from F to G, add note in electrical power "240 Vac version available"	4/26/2013	Prepared By: Elke Hinson Approved By: Andy Rudolph